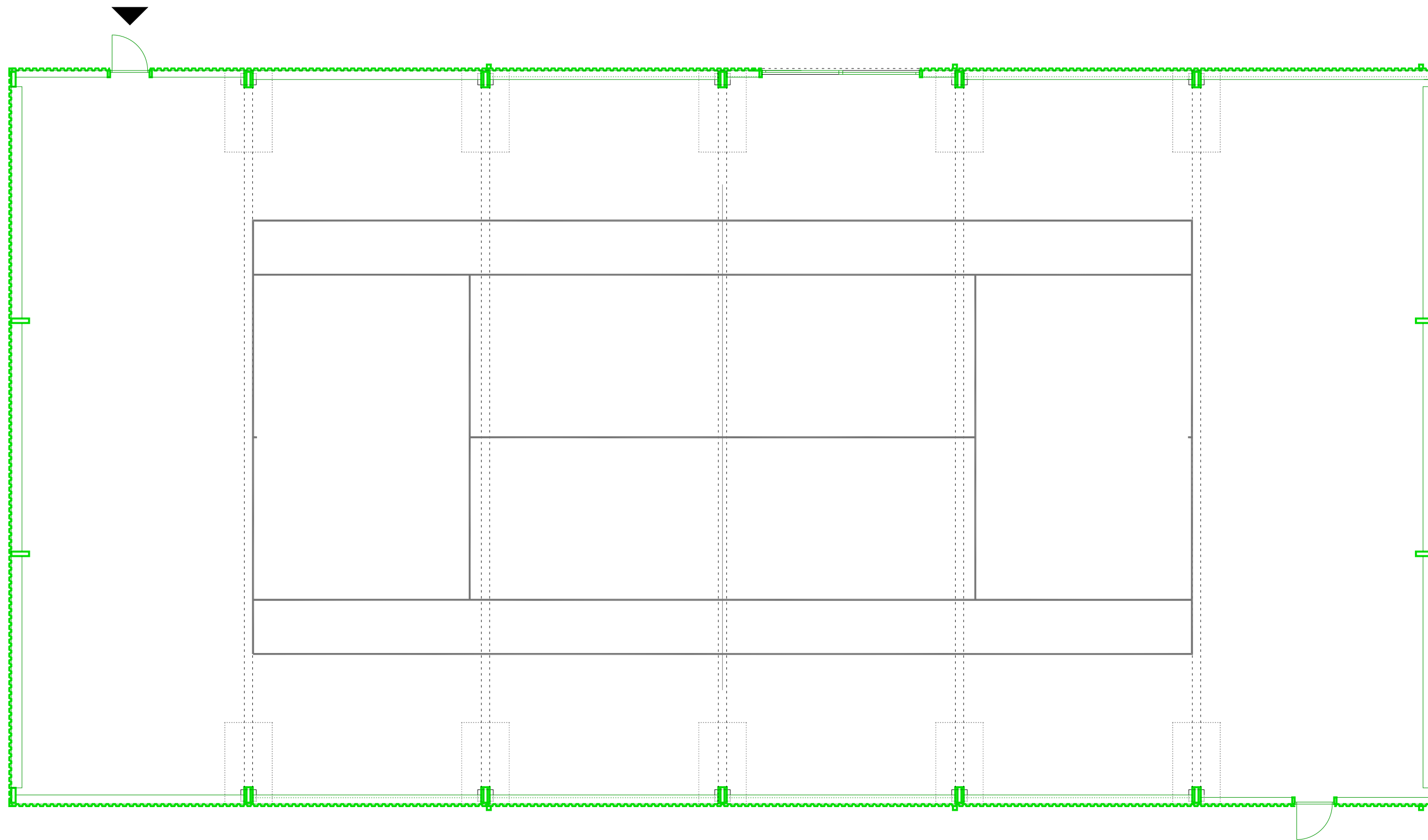
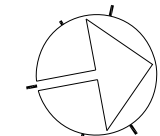
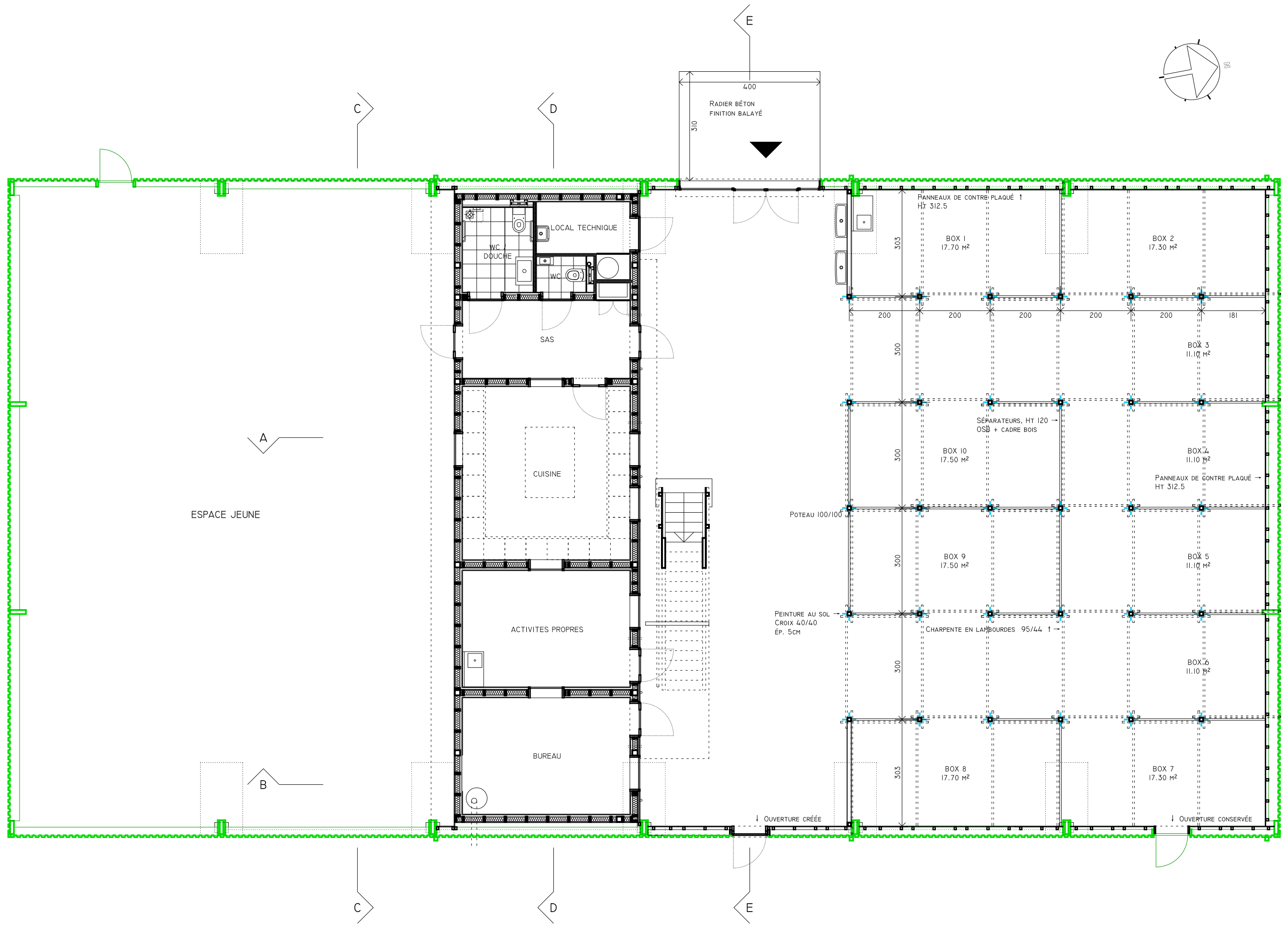
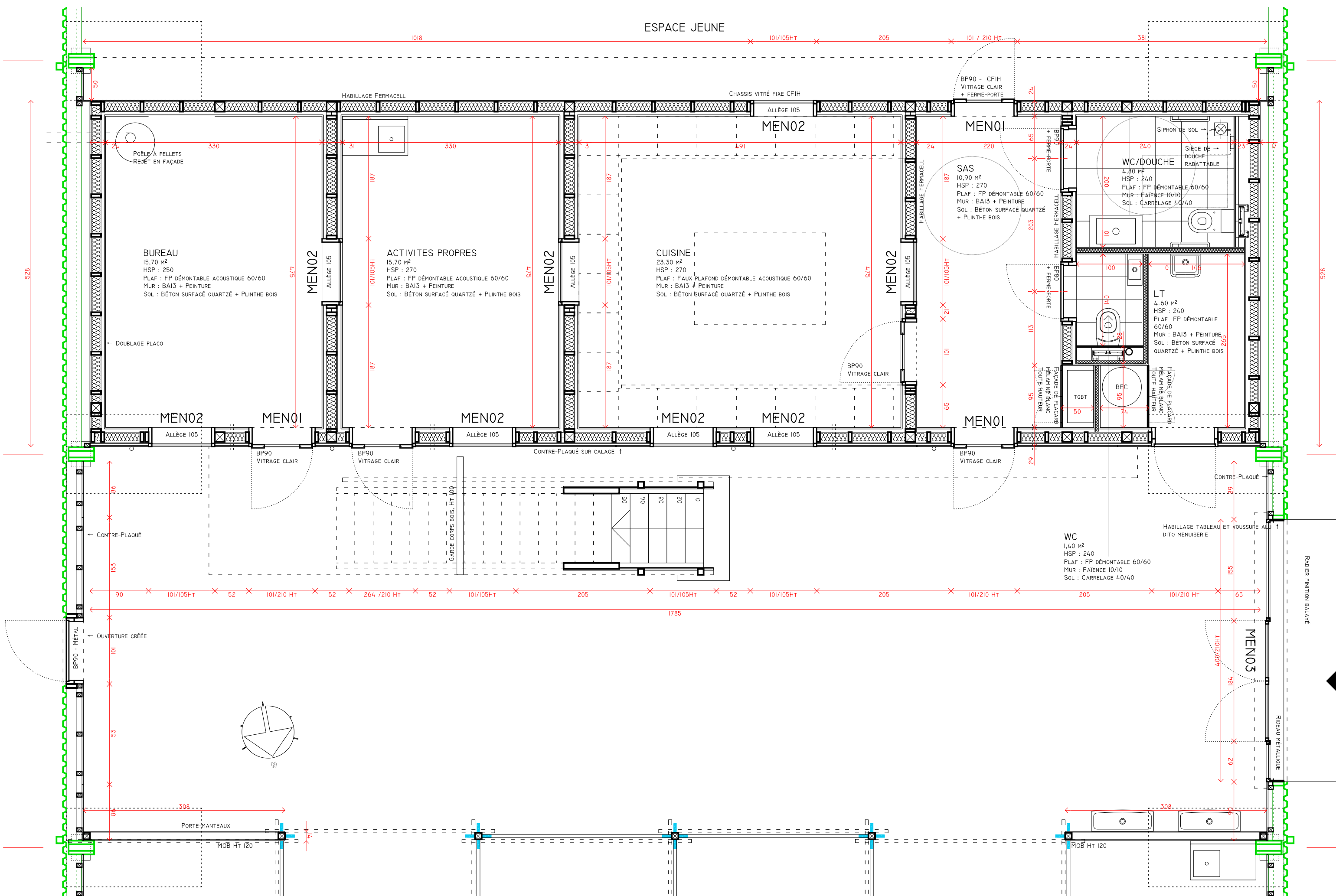


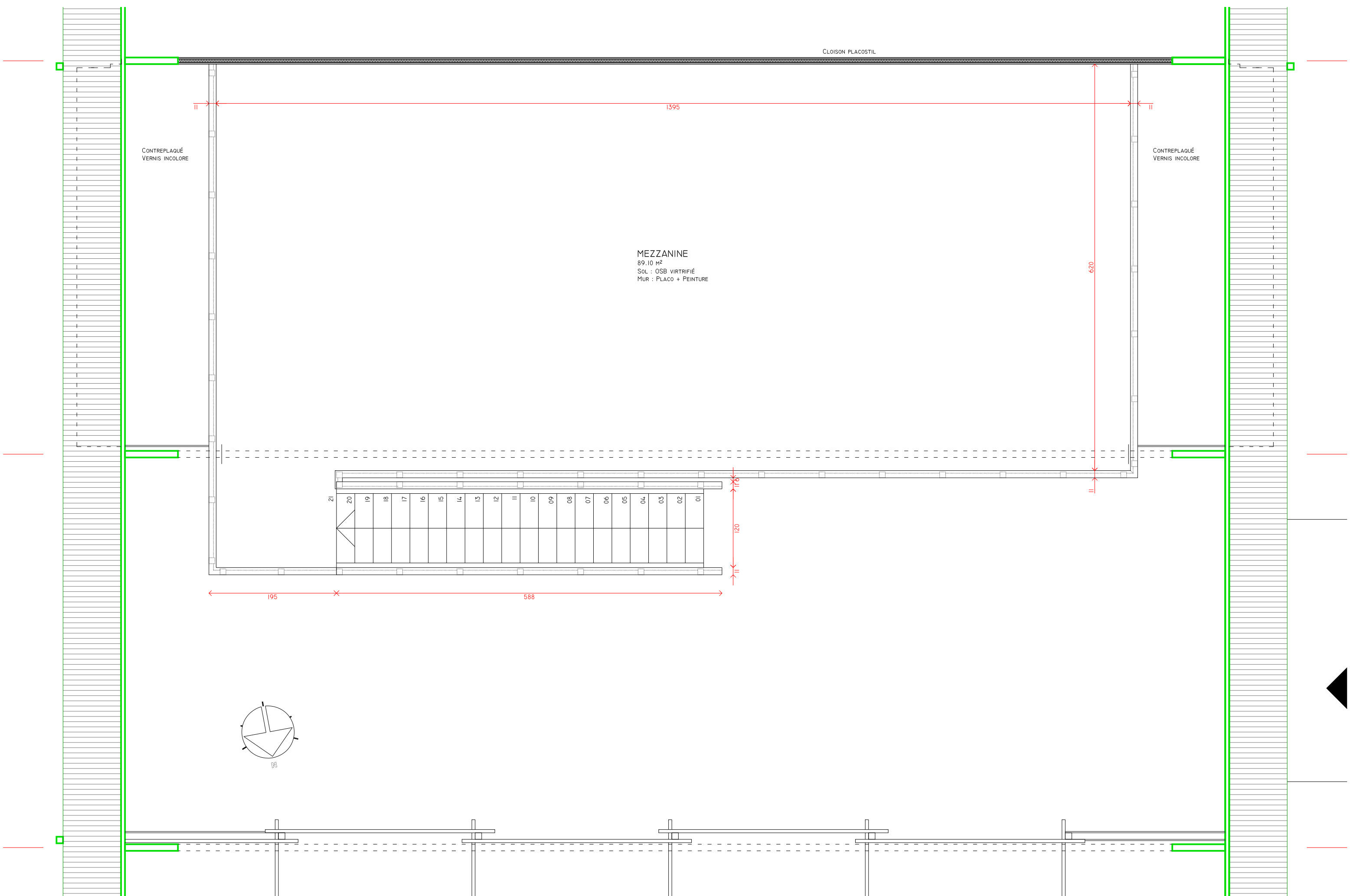


Maîtrise d'Ouvrage	COMMUNE DE BELZ 34 rue du Général De Gaulle 56550 BELZ
Opération	CREATION D'UN LOCAL ASSOCIATIF "L'OUTILS EN MAIN" 60 rue des sports 56550 BELZ
Phase	DCE
Date	08.09.2022
Document	Pièces graphiques
Format	A3
Maîtrise d'Oeuvre	LE ROMANCER ARCHITECTURES 40 avenue de la Perrière 56100 LORIENT 06 15 76 23 52 atelier@leromancer.com ARMOR ECONOMIE 12 Impasse Royer Dubail BP 10827 56108 LORIENT CEDEX 02 97 21 09 18 armor.eco@armor-economie.com AERIUS 99 rue Jean Noël Jégo 56600 LANESTER 02 97 86 08 70 damien@aerius.bzh







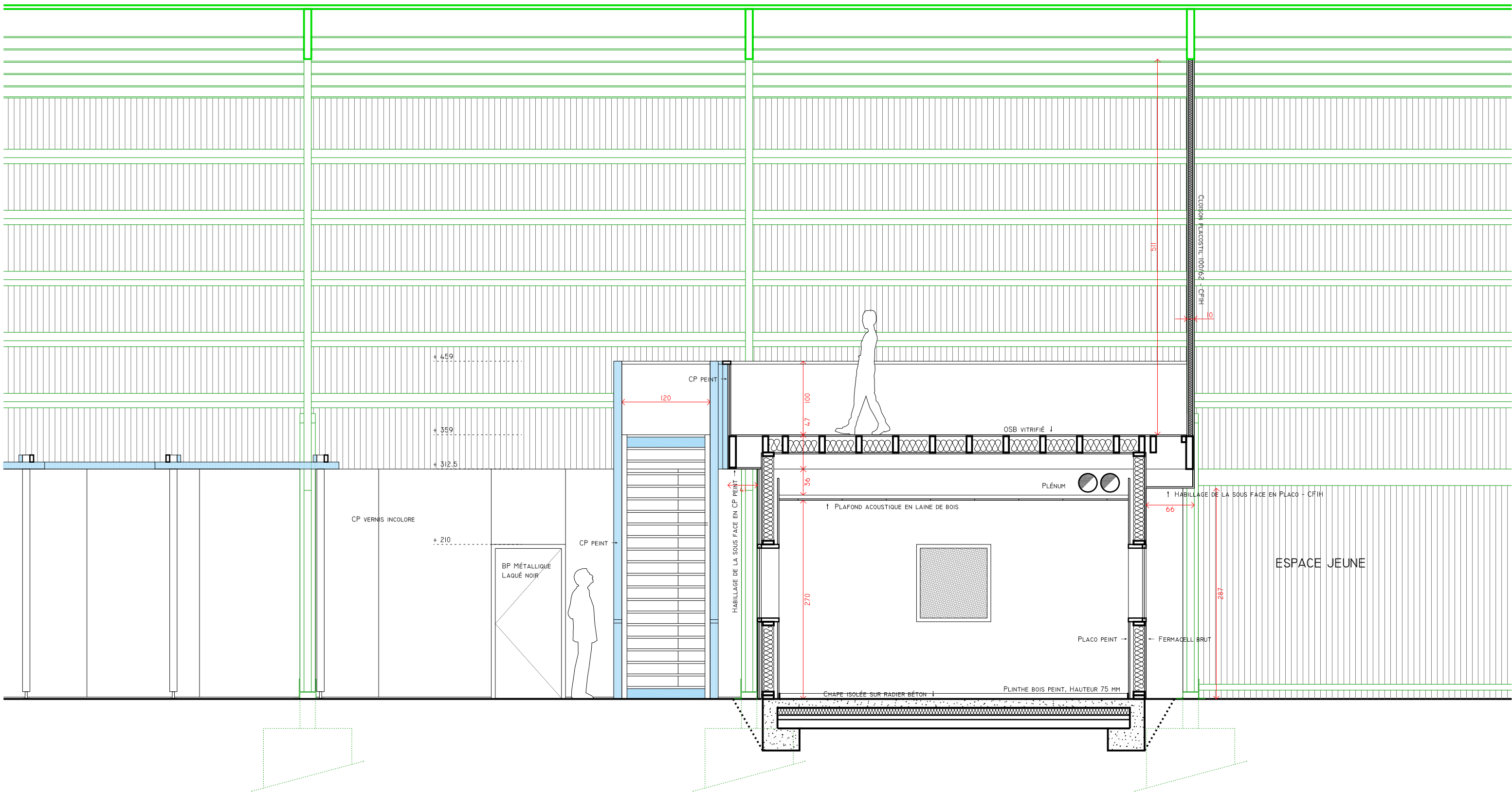


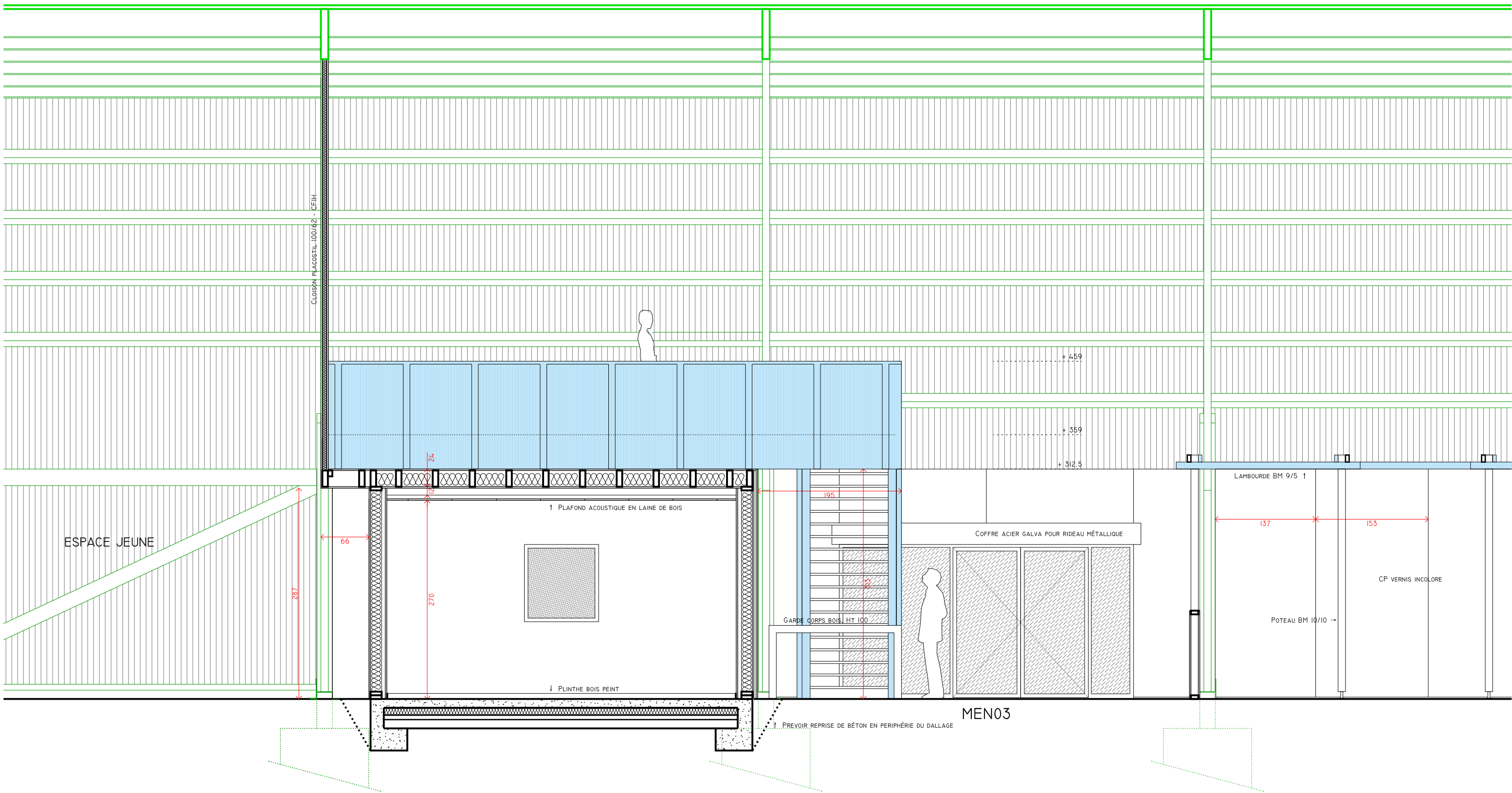
MEZZANINE
 89.10 M²
 Sol : OSB VIRTRIFIÉ
 MUR : PLACO + PEINTURE

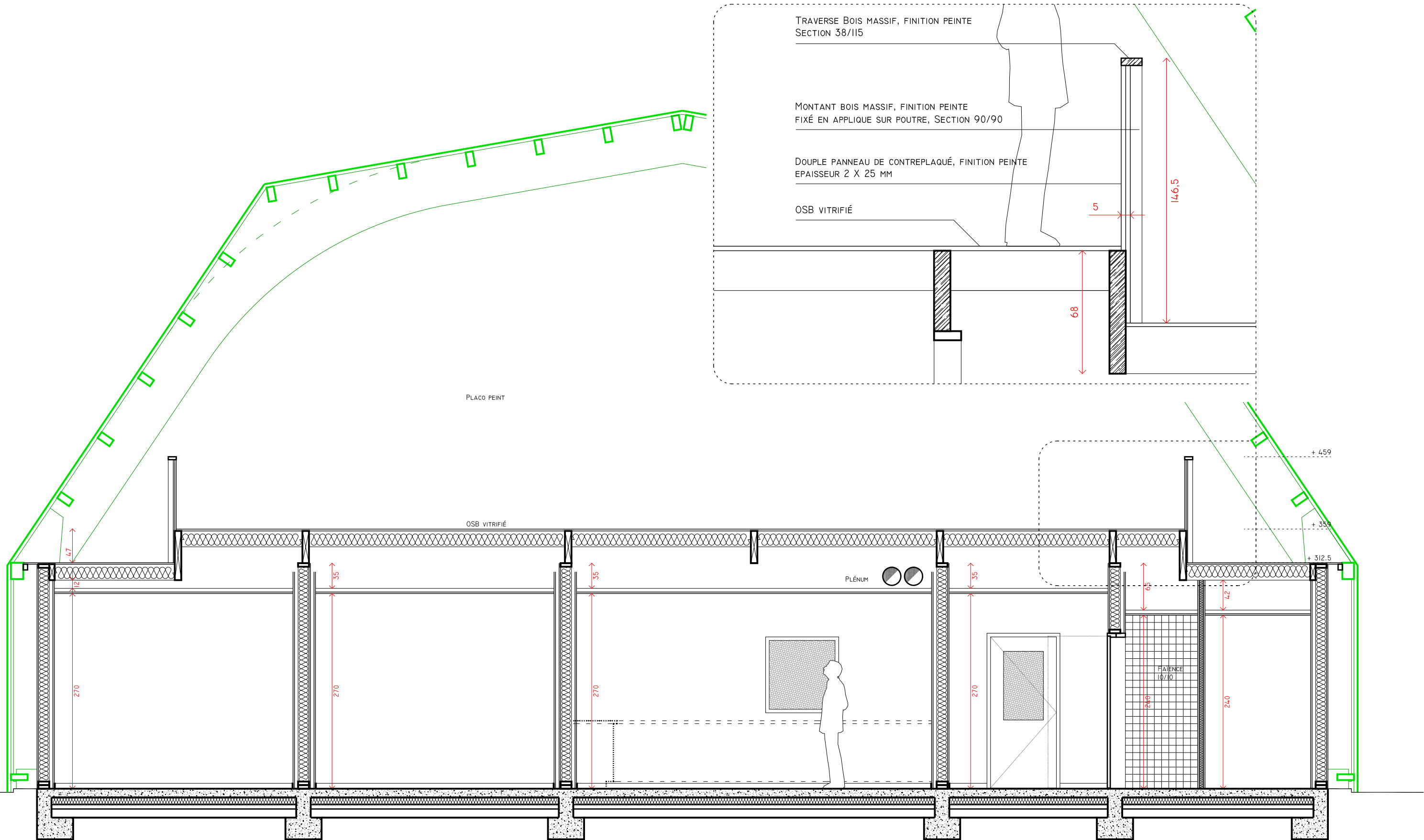
CONTREPLAQUÉ
 VERNIS INCOLORE

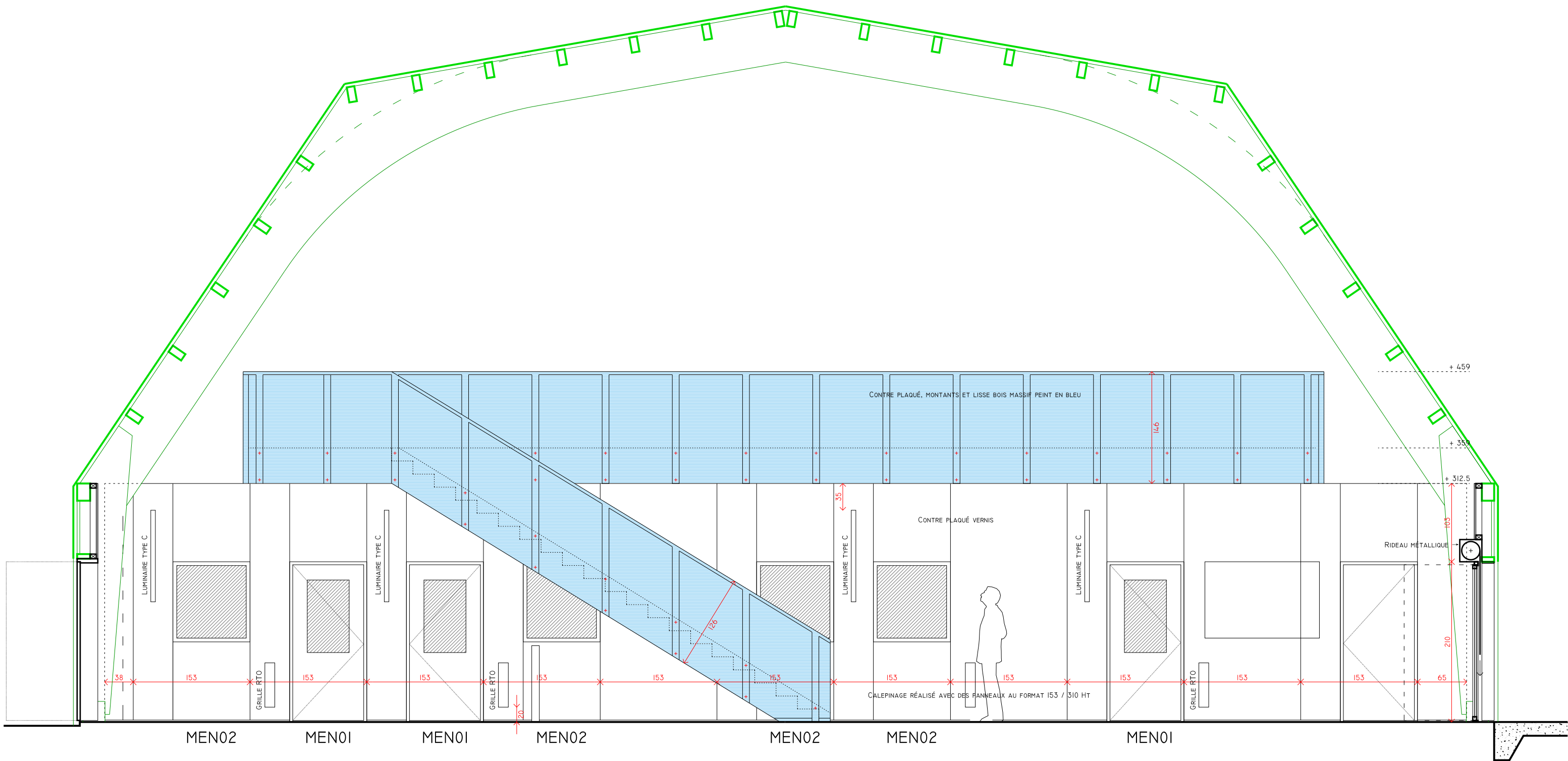
CONTREPLAQUÉ
 VERNIS INCOLORE

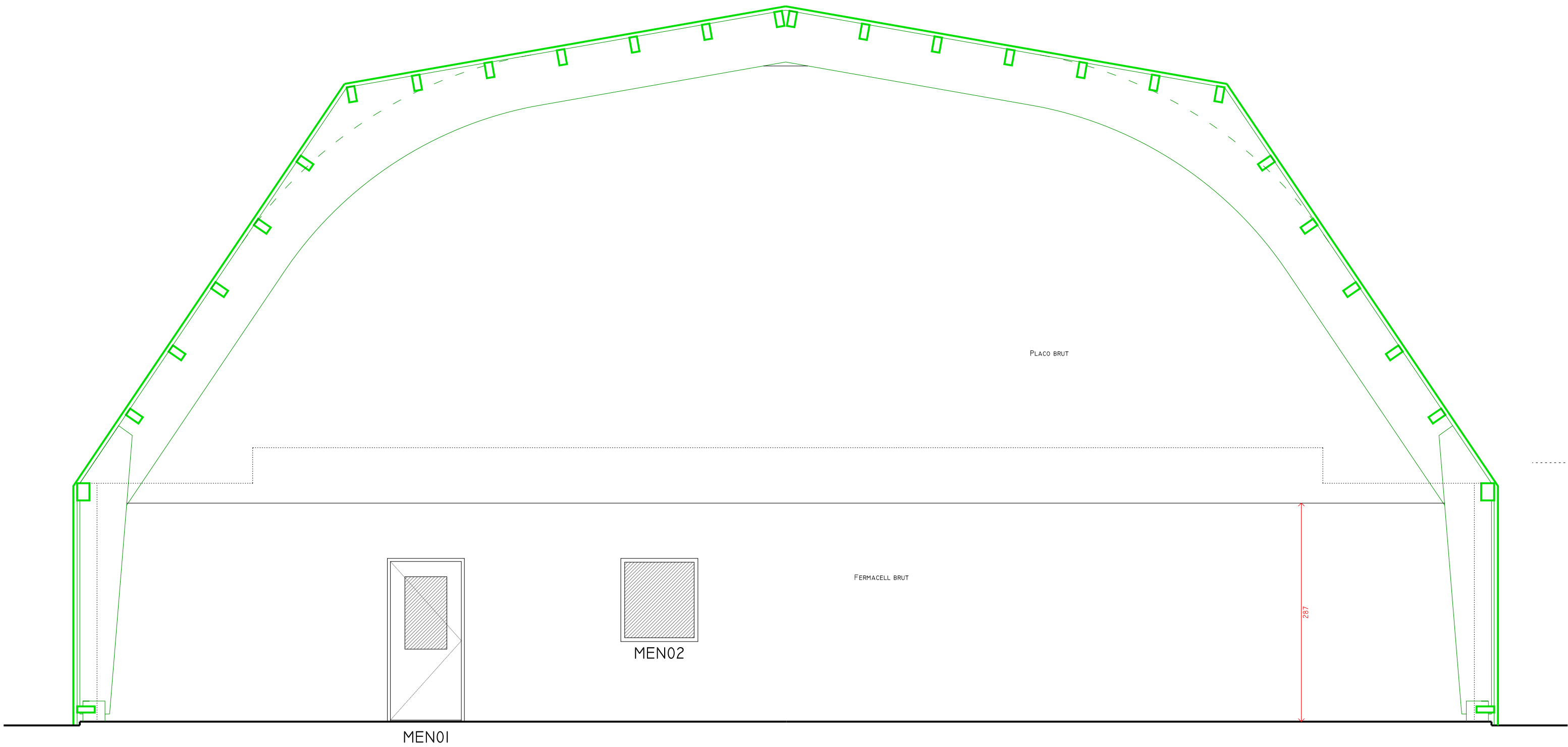
CLOISON PLACOSTIL

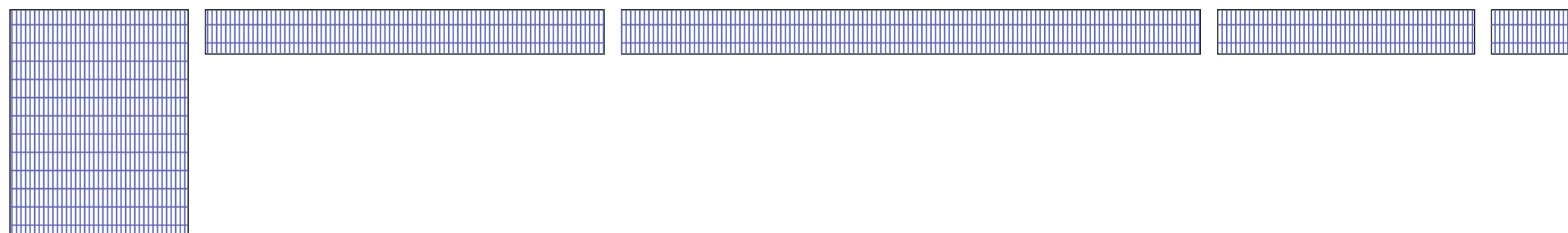
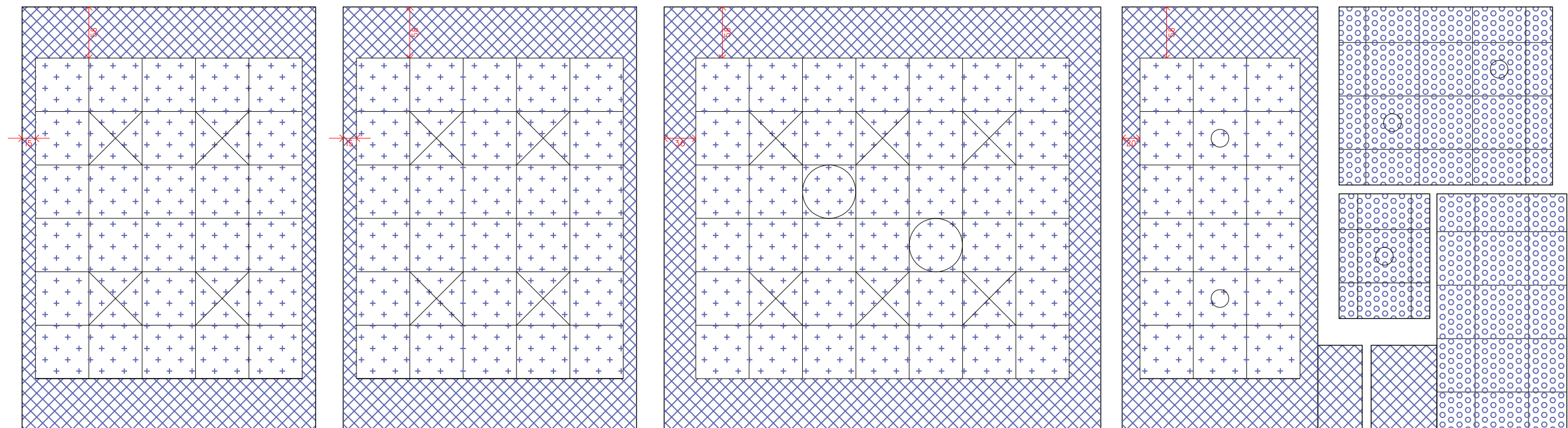
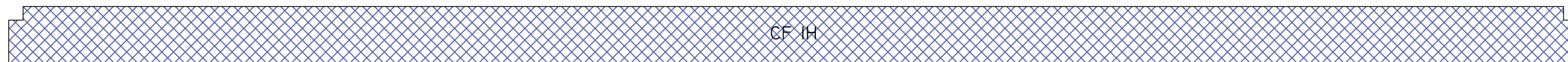




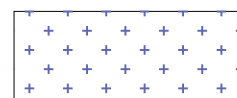




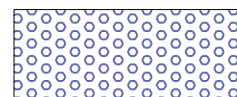




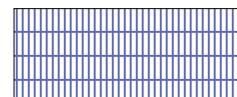
FAUX-PLAFOND PLACO PEINT NON DÉMONTABLE



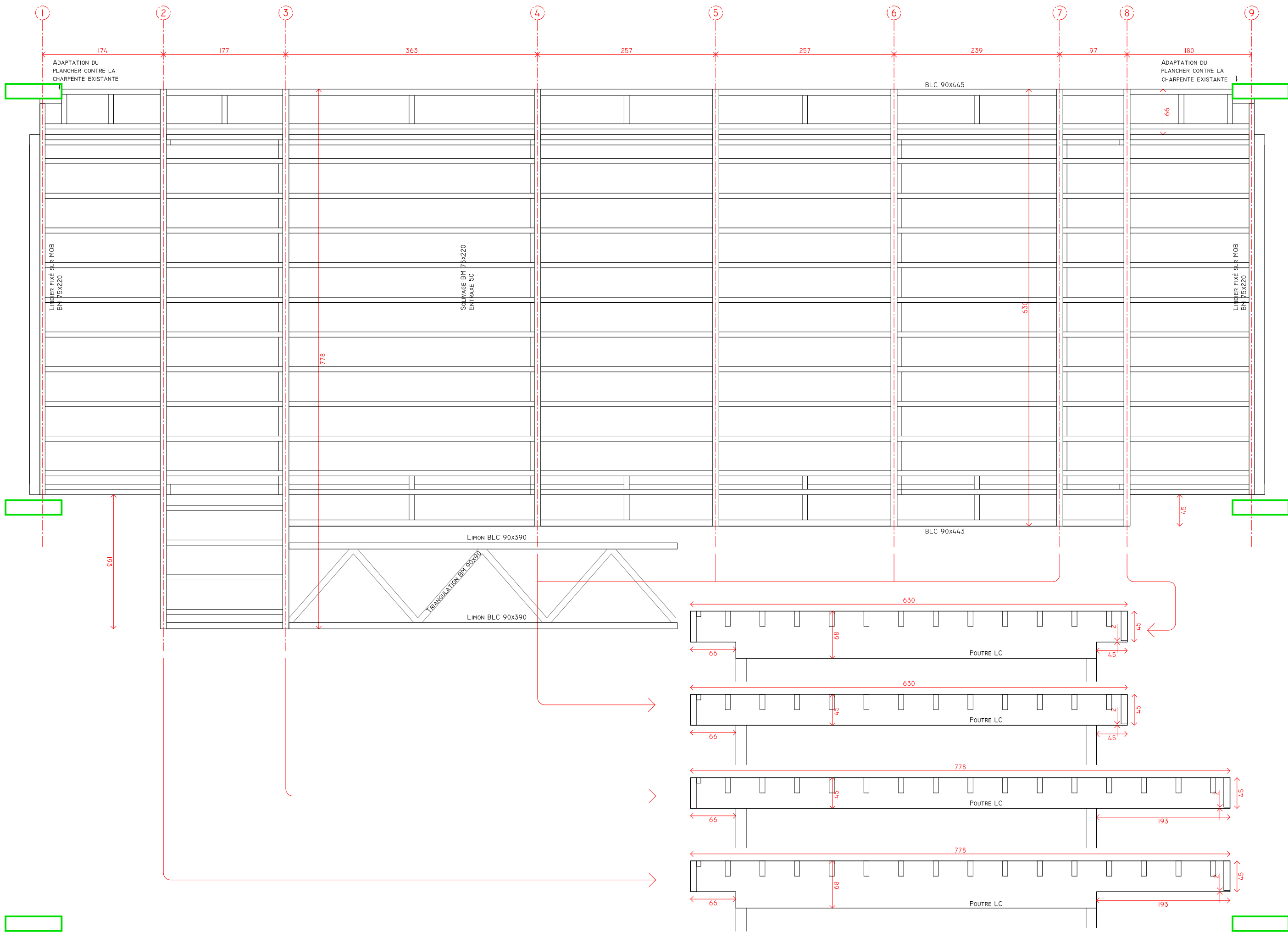
FAUX-PLAFOND DÉMONTABLE EN LAINE DE BOIS (60/60)
BORD FEUILLURÉ T35

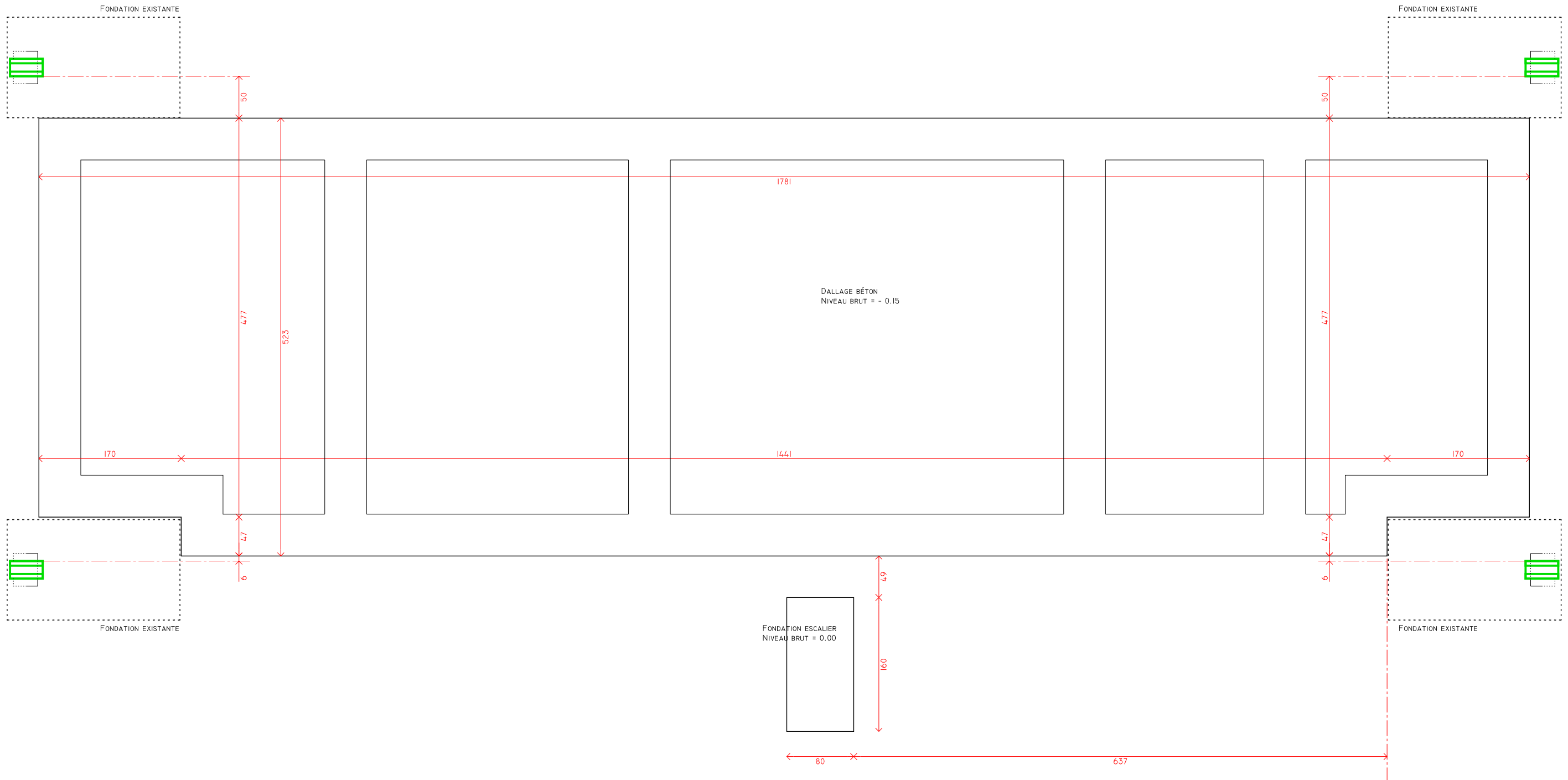


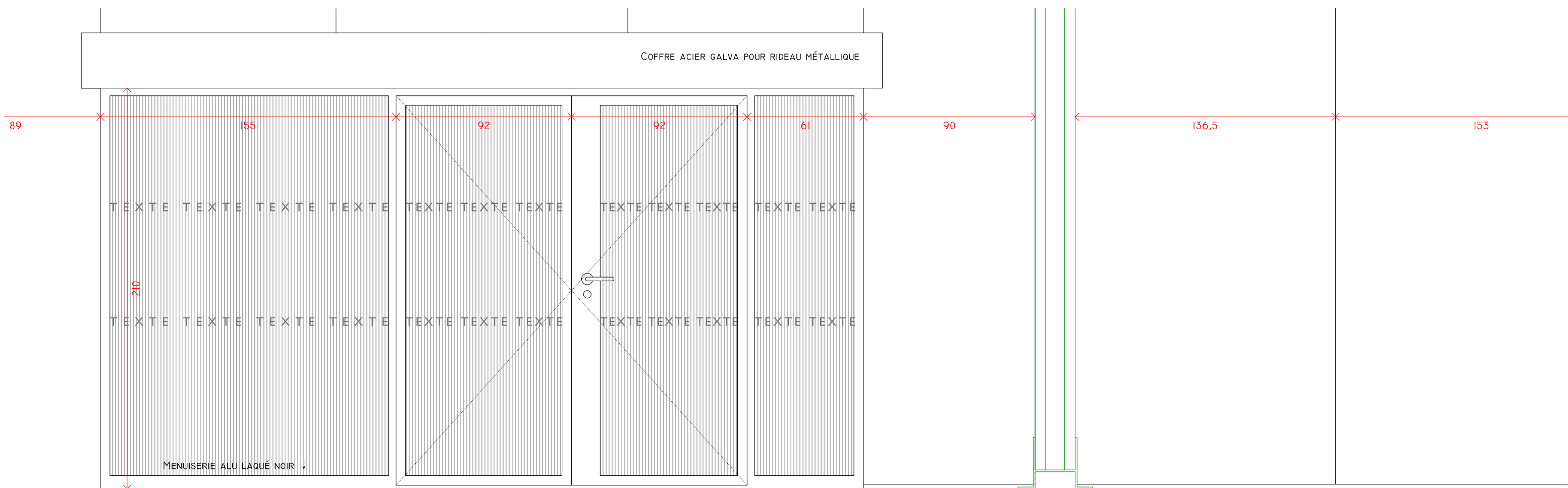
FAUX-PLAFOND DÉMONTABLE POUR PIÈCE HUMIDE (60/60)



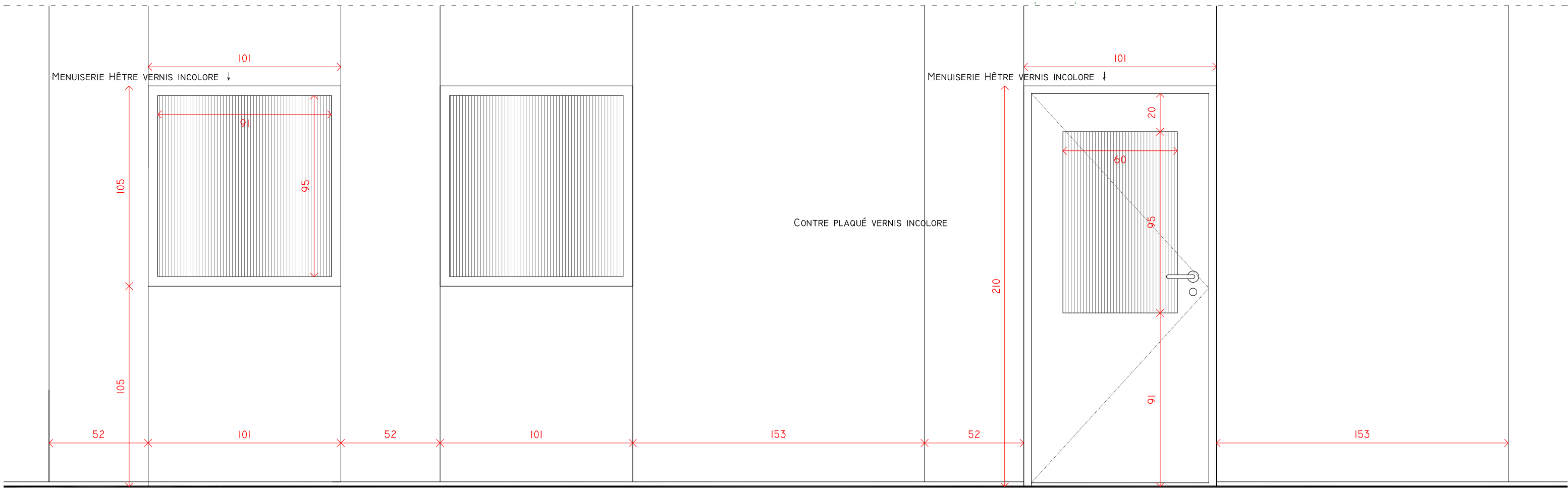
CONTRE-PLAQUÉ PEINT







MEN03



MEN02

MEN02

MEN01